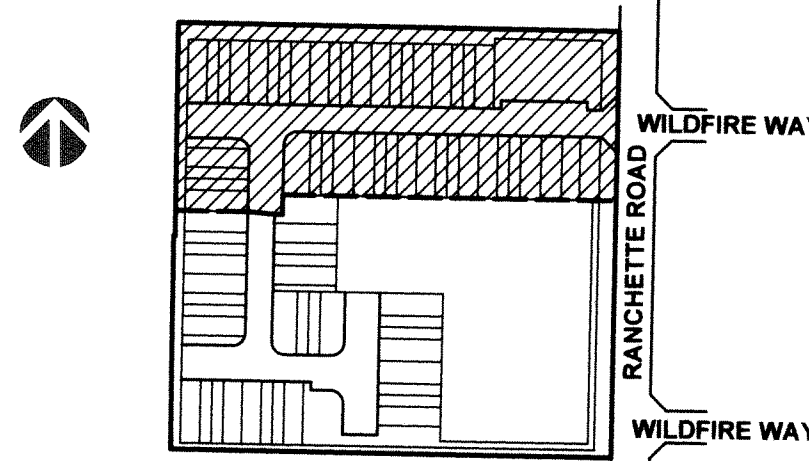
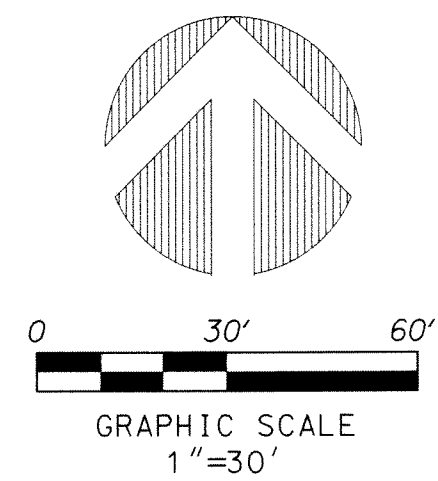


PERIMETER

SURVEYING & MAPPING
Certificate of Authorization No. LB7264
Prepared by: Jeff S. Hodapp, P.S.M.
947 Clint Moore Road
Boca Raton, Florida 33487
Tel: (561) 241-9988
Fax: (561) 241-5182



KEY MAP
NOT TO SCALE

RANCHETTE ROAD TOWNHOMES

A PORTION OF THE NORTHWEST ONE-QUARTER OF THE SOUTHEAST ONE-QUARTER
OF THE NORTHEAST ONE-QUARTER OF SECTION 10 TOWNSHIP 44 SOUTH RANGE 42 EAST
CITY OF GREENACRES, PALM BEACH COUNTY, FLORIDA.

ABBREVIATIONS:

- P.D.E. PUBLIC DRAINAGE EASEMENT
- B.E. BUFFER EASEMENT
- SF SQUARE FEET
- COR. CORNER
- D DELTA (CENTRAL ANGLE)
- D.E. DRAINAGE EASEMENT
- P.D.E. PUBLIC DRAINAGE EASEMENT
- F.P.L. FLORIDA POWER AND LIGHT COMPANY LICENSED BUSINESS
- L.B.E. LANDSCAPE BUFFER EASEMENT
- L.M.E. LAKE MAINTENANCE EASEMENT
- L.M.A.E. LAKE MAINTENANCE ACCESS EASEMENT
- L.S. LICENSED SURVEYOR
- L.S.E. LIFT STATION EASEMENT
- L.W.D.D. LAKE WORTH DRAINAGE DISTRICT MONUMENT
- O.R.B. OFFICIAL RECORDS BOOK
- P.B. PLAT BOOK
- R RADIUS
- L (N.R.) LENGTH NON-RADIAL
- (RAD.) RADIAL
- P.B.C.R. PALM BEACH COUNTY RECORDS
- P.B.C.U.E. PALM BEACH COUNTY UTILITY EASEMENT
- P.C. PAGE
- P.G.S. PAGES
- P.O.B. POINT OF BEGINNING
- P.O.C. POINT OF COMMENCEMENT
- P.R.M. PERMANENT REFERENCE MONUMENT
- P.S.M. PROFESSIONAL SURVEYOR & MAPPER
- P.U.D. PLANNED UNIT DEVELOPMENT
- R.A.S. RESIDENTIAL ACCESS STREET
- R.L.S. REGISTERED LAND SURVEYOR
- R/W RIGHT-OF-WAY
- SEC. SECTION
- U.E. UTILITY EASEMENT
- PC POINT OF CURVATURE
- PT POINT OF TANGENCY
- PCC POINT OF COMPOUND CURVATURE
- NT NON-TANGENT
- D.B. DEED BOOK
- M.R.O.E. MAINTENANCE AND ROOF OVERHANG EASEMENT
- P.C.P. PERMANENT CONTROL POINT

NOTES: COORDINATES, BEARINGS AND DISTANCES

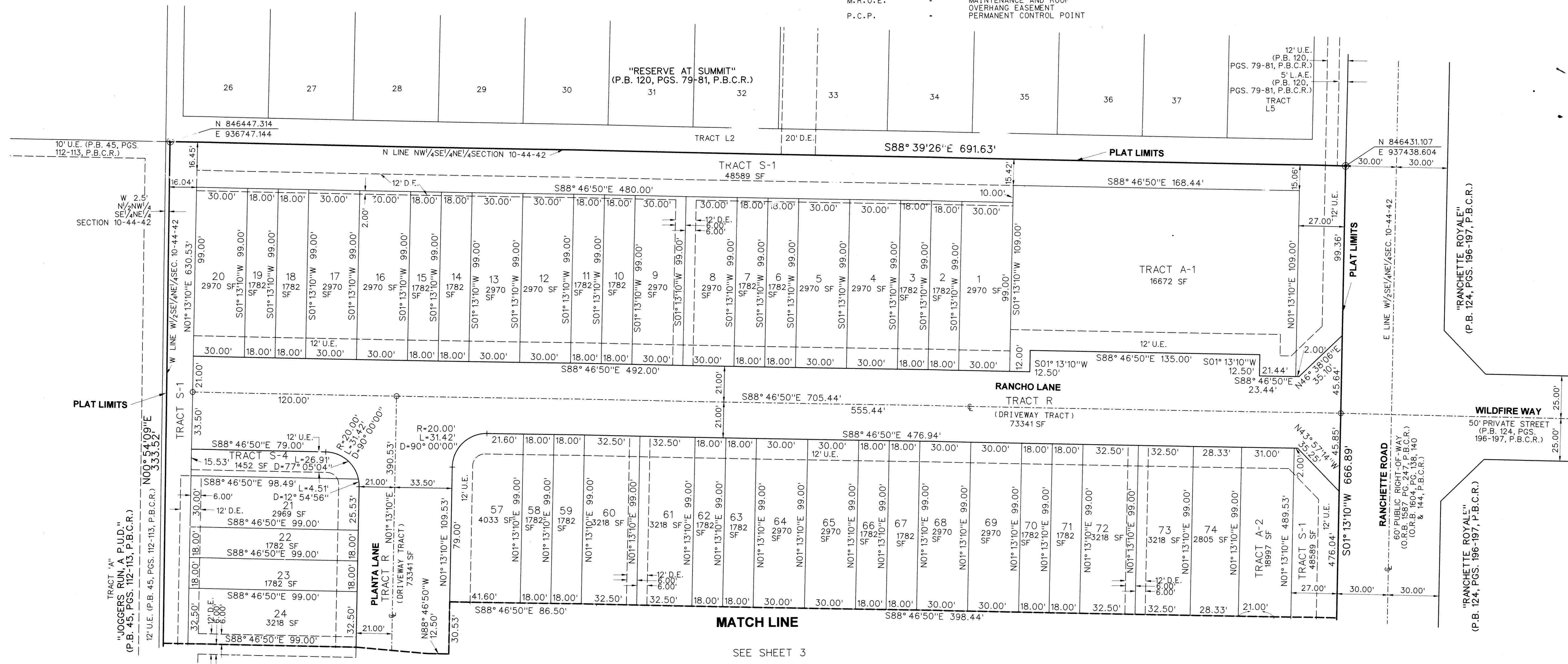
COORDINATES SHOWN ARE GRID
DATUM - NAD 83 1990 ADJUSTMENT
ZONE - FLORIDA EAST
LINEAR UNIT - US SURVEY FOOT
COORDINATE SYSTEM 1983 STATE PLANE
TRANSVERSE MERCATOR PROJECTION
ALL DISTANCES ARE GROUND, UNLESS OTHERWISE NOTED
SCALE FACTOR = 1.0000318
GROUND DISTANCE X SCALE FACTOR = GRID DISTANCE
BEARINGS AS SHOWN HEREON ARE GRID DATUM,
NAD 83 1990 ADJUSTMENT, FLORIDA EAST ZONE

LEGEND:

- SET P.R.M. (UNLESS OTHERWISE NOTED) 4" x 4" CONCRETE MON. WITH ALUMINUM DISK STAMPED *LB7264
- CENTERLINE
- PERMANENT CONTROL POINT L.B. 7264

157

SHEET 2 OF 3



MATCH LINE

SEE SHEET 3